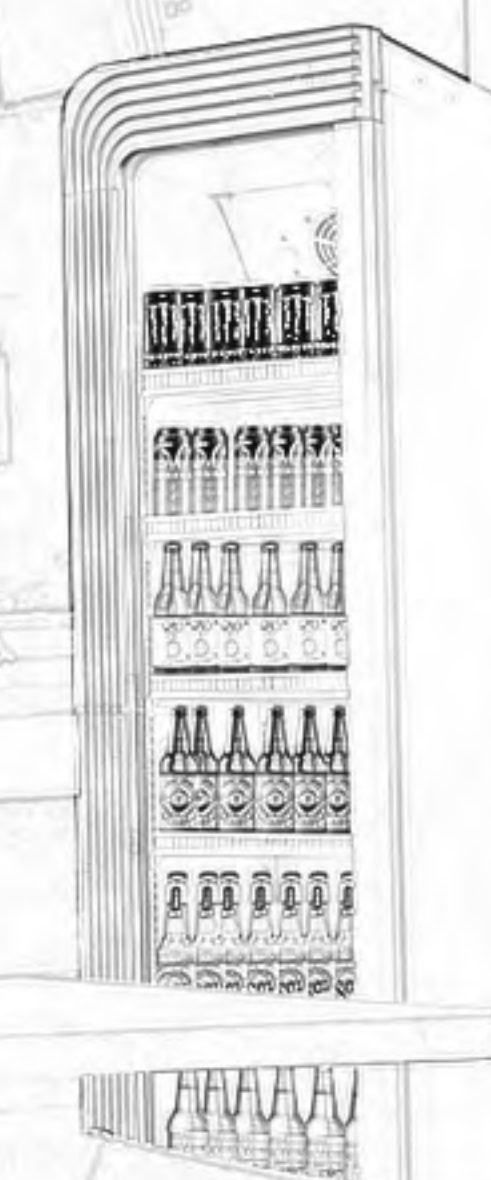
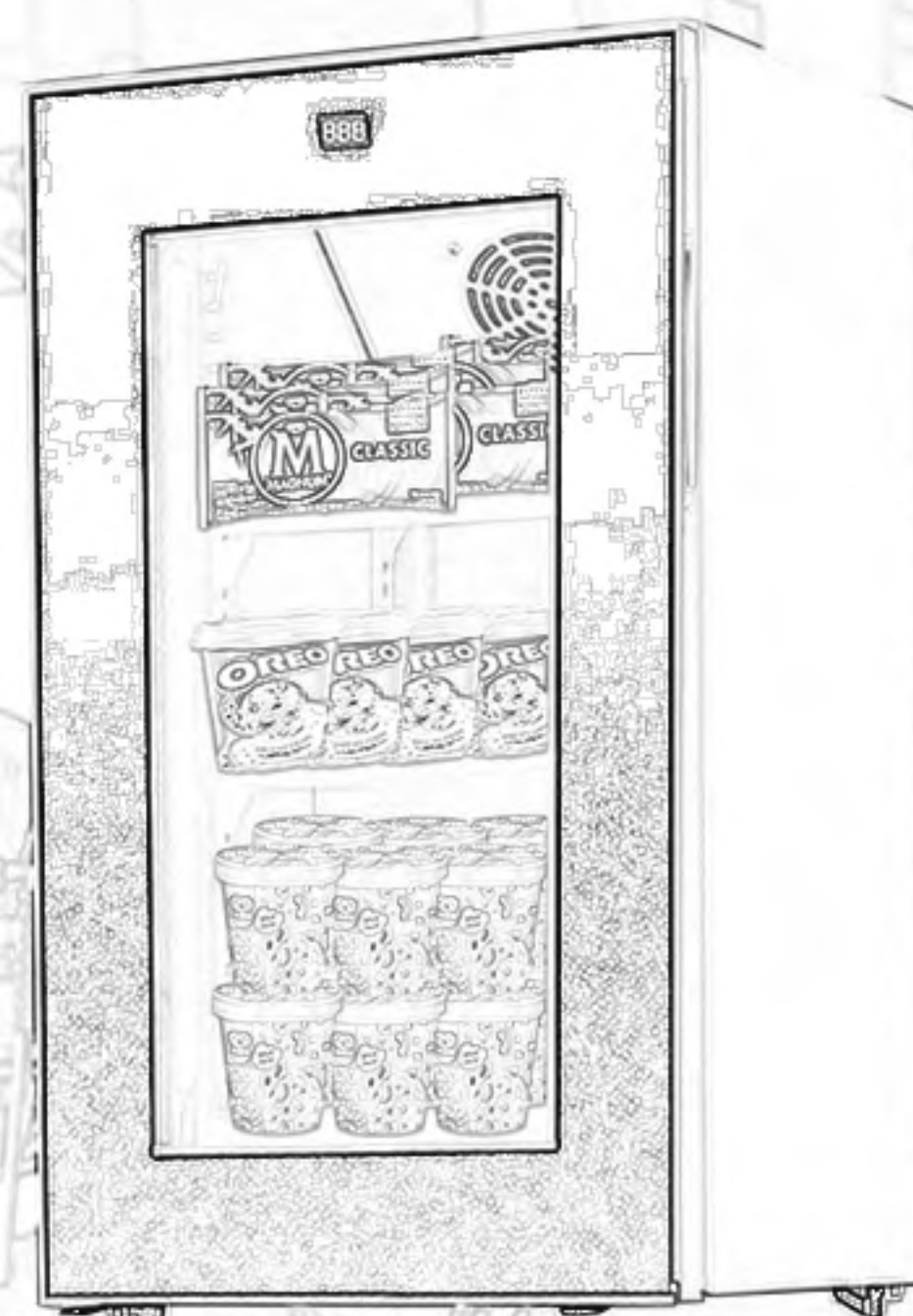
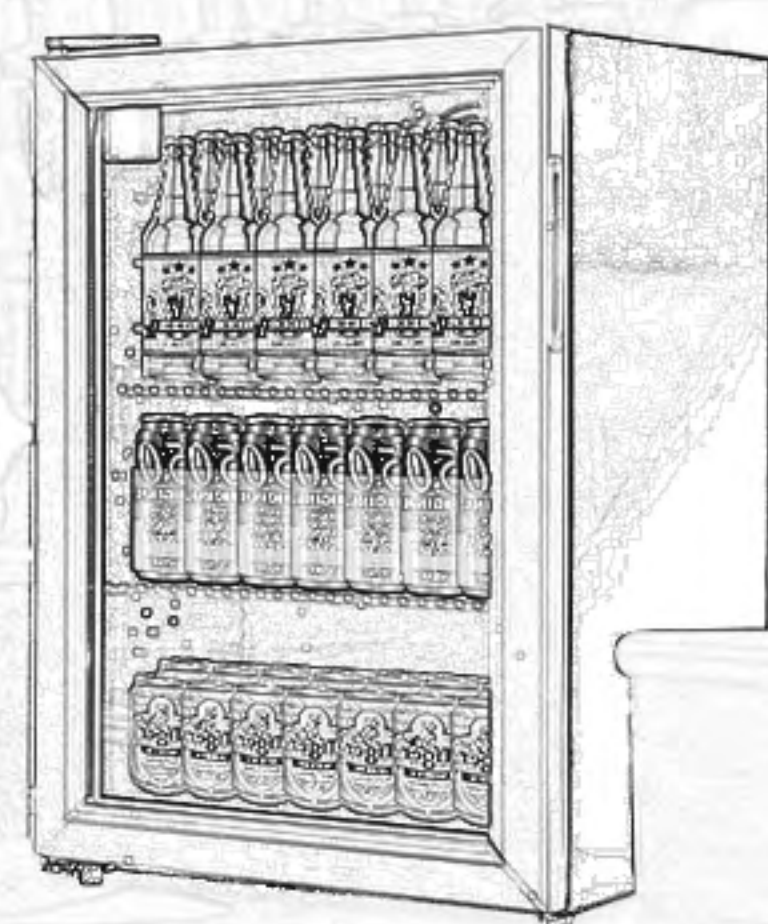




NOT JUST

Display Freezer

Nenwell Refrigeration Technology Co., Ltd.
Foshan Nenwell Import & Export Trading Co., Ltd.





Your Ideal One-Stop Supplier of Commercial Fridges

Nenwell, China tier 1 commercial refrigeration solution provider, with 7+ affiliated factories standing behind us, we are enduring in operating mass production and fast delivery for valued clients across the world. Alongside the decades since China's open policy in 90's, Nenwell took deep root in China commercial refrigeration industry and grew into a total solution provider of commercial refrigeration equipment, such as reach in refrigerator, glass door merchandiser, countertop fridge, back bar fridge, conventional fridges and freezers, and medical purpose refrigerators. Besides these commercial refrigerators, also we are supplying numerous components and fridge production lines. Nenwell Import and Export is our export outlet and the helper in pivoting global supply chain in this field across the world. We are committed to become your ideal one-stop supplier of freezers and coolers.



Nenwell, a Joint of High Quality upon Cost-Efficiency

Deeply rooted in China refrigeration industry for the past three decades, we have developed prominent expertise and leading technology which bring our manufacturing to world-class high quality. Quality and safety standards such as ISO90001, CE, RoHS, REACH, ETL, UL, NSF, CB, SAA and other norms are well met for different product lines. High quality products and efficient inner cost control empowers Nenwell to grow rapidly in the refrigeration field. Your one-stop refrigeration supplier is us as we run comprehensively full field refrigeration equipment, from cooler to freezer, from mini to large, from counter-top to free-standing, from complete units to components, and from products to production lines. We are professional in satisfying your OEM/ ODM and customized orders.

We help Boost Your Brand in Catering and Retailing



We are always one step ahead of the food service and retailing business. Our insights in stylish designs, illuminated visibility, energy saving technology can definitely boost your brand distribution and retailing sales. Remarkable acknowledgements are bestowed to Nenwell through trustworthy cooperations with famous clients home and abroad, such as Qingdao Beer, Tiger Beer, Polar Bear, Nestle', Meiji, Dairy Queen, Arum, Klondike, Cream Bell, Dairy Day, Igloo, Orchard Fresh, Cold Stone, Llaollao, Fruits, Amorino, Galadari and the list extends yearly.



Barrel Cooler



Countertop Chiller



Silm Upright Freezer



Upright Fridge



Cake Showcase



Ice Cream Showcase



Supermarket Merchandiser



Medical Refrigerator

2 ~ 8°C Pharmacy Refrigerator



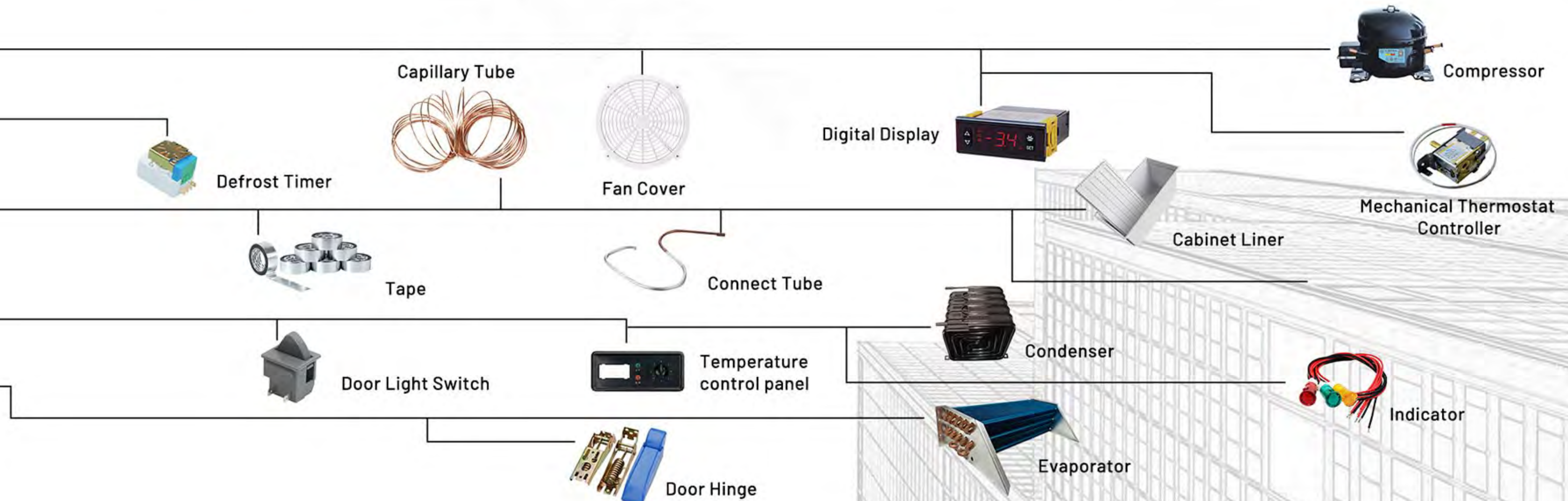
4°C Blood Bank Refrigerator



-40°C Biomedical Freezer



Transport Cooler



Mini Display Freezer



Features and Benefits

- Transparent tempered glass door
- Customized top and side stickers for brand display
- Small size to fit any compact point of sales
- Adjustable heavy-duty shelves
- Interior LED light for illumination and attraction
- Adjustable shelves to fit any shape of frozen snacks
- Lock & key for safety concerns

Certification:  **CB CE SAA RoHS**



Product Applications



Cake bakery



Convenience shop



Bar



Restaurant

Optional Details

We supply 6 options display freezer from 12 to 98 liters for choices. Stickers can be designed around the cabinet. It's designed for requirement of ice-cream, frozen food in convenient shops, restaurants.



Digital thermameter



Digital temperature control



Internal fan



Lock



LED light



Shelves

Customized Cases



NW-SD16



NW-SD21



NW-SD48



NW-SD55



NW-SD70



NW-SD98

Product Parameters



Model No	NW-SD16
Unit Size (WxDxH) (mm)	330x361x450
Carton Size (WxDxH) (mm)	395x425x500
Capacity (L)	12
Temperature Range(°C)	-4~-10
N.W/G.W (kgs)	20/22
Input Power(W)	65
Power Consumption(Kw-h/24h)	1.2
Loading 20'FT/40'GP/40'HQ	176/368/368
Certification	CE,CB,ETL,ROHS,SAA



Model No	NW-SD55
Unit Size (WxDxH) (mm)	595x530x625
Carton Size (WxDxH) (mm)	681x591x690
Capacity (L)	55
Temperature Range(°C)	-25~-18
N.W/G.W (kgs)	38/42
Input Power(W)	155
Power Consumption(Kw-h/24h)	2
Loading 20'FT/40'GP/40'HQ	81/162/162
Certification	CE,CB,ETL,ROHS,SAA



Model No	NW-SD21
Unit Size (WxDxH) (mm)	380x438x520
Carton Size (WxDxH) (mm)	454x517x600
Capacity (L)	21
Temperature Range(°C)	-15~-18
N.W/G.W (kgs)	22/24
Input Power(W)	130
Power Consumption(Kw-h/24h)	1.2
Loading 20'FT/40'GP/40'HQ	165/330/440
Certification	CE,CB,ETL,ROHS,SAA



Model No	NW-SD70
Unit Size (WxDxH) (mm)	480x485x850
Carton Size (WxDxH) (mm)	560x560x923
Capacity (L)	70
Temperature Range(°C)	-25~-18
N.W/G.W (kgs)	42/45
Input Power(W)	155
Power Consumption(Kw-h/24h)	2.4
Loading 20'FT/40'GP/40'HQ	80/168/168
Certification	CE,CB,ETL,ROHS,SAA



Model No	NW-SD48
Unit Size (WxDxH) (mm)	435x511x695
Carton Size (WxDxH) (mm)	492x582x755
Capacity (L)	48
Temperature Range(°C)	-25~-18
N.W/G.W (kgs)	36/40
Input Power(W)	230
Power Consumption(Kw-h/24h)	2.8
Loading 20'FT/40'GP/40'HQ	66/132/132
Certification	CE,CB,ETL,ROHS,SAA



Model No	NW-SD98
Unit Size (WxDxH) (mm)	595x545x850
Carton Size (WxDxH) (mm)	681x591x916
Capacity (L)	98
Temperature Range(°C)	-25~-18
N.W/G.W (kgs)	50/54
Input Power(W)	158
Power Consumption(Kw-h/24h)	3.3
Loading 20'FT/40'GP/40'HQ	54/120/120
Certification	CE,CB,ETL,ROHS,SAA

Display Freezer with Light Box



Features and Benefits

- Attention-garbbing lightbox design
- Heating glass door and automatic closing door
- Lock & Key for safety concerns
- Digital thermostat temperature display
- Mini size fit for desktop display
- Transparent tempered glass door
- Interior LED light with switch
- Adjustable heavy-duty shelf

Certification: **CB CE SAA RoHS**



Product Applications



Bar

Restaurant

Canteen

Party

Optional Details

This type of Display freezer with lightbox have 7 options from 21 to 60 liters for choices, which is satisfy the requirement of manufacturer to advertise products. It's designed most for shops, restaurants for advertising.



Digital thermameter



Digital temperature control



Internal fan



Lock



LED light



Shelves

Customized Cases



NW-SD21B



NW-SD40B



NW-SD50B



NW-SD55B



NW-SD60B



NW-SD70B



NW-SD98B

Product Parameters



Model No	NW-SD21B
Unit Size (WxDxH) (mm)	380x438x660
Carton Size (WxDxH) (mm)	454x517x740
Capacity (L)	21
Temperature Range(°C)	-15~-18
N.W/G.W (kgs)	25/27
Input Power(W)	150
Power Consumption(Kw-h/24h)	1.2
Loading 20'FT/40'GP/40'HQ	165/330/330
Certification	CE,CB,ETL,ROHS,SAA



Model No	NW-SD55B
Unit Size (WxDxH) (mm)	595x550x766
Carton Size (WxDxH) (mm)	681x591x850
Capacity (L)	55
Temperature Range(°C)	-25~-18
N.W/G.W (kgs)	41/45
Input Power(W)	175
Power Consumption(Kw-h/24h)	2
Loading 20'FT/40'GP/40'HQ	54/120/180
Certification	CE,CB,ETL,ROHS,SAA



Model No	NW-SD60B
Unit Size (WxDxH) (mm)	460x500x876
Carton Size (WxDxH) (mm)	540x560x956
Capacity (L)	60
Temperature Range(°C)	-25~-18
N.W/G.W (kgs)	40/44
Input Power(W)	230
Power Consumption(Kw-h/24h)	2
Loading 20'FT/40'GP/40'HQ	80/168/168
Certification	CE,CB,ETL,ROHS,SAA



Model No	NW-SD40B
Unit Size (WxDxH) (mm)	420x470x793
Carton Size (WxDxH) (mm)	485x565x853
Capacity (L)	40
Temperature Range(°C)	-25~-18
N.W/G.W (kgs)	31/33
Input Power(W)	170
Power Consumption(Kw-h/24h)	2.1
Loading 20'FT/40'GP/40'HQ	96/288/288
Certification	CE,CB,ETL,ROHS,SAA



Model No	NW-SD70B
Unit Size (WxDxH) (mm)	480x485x990
Carton Size (WxDxH) (mm)	560x560x1183
Capacity (L)	70
Temperature Range(°C)	-25~-18
N.W/G.W (kgs)	42/45
Input Power(W)	175
Power Consumption(Kw-h/24h)	2.4
Loading 20'FT/40'GP/40'HQ	80/168/168
Certification	CE,CB,ETL,ROHS,SAA



Model No	NW-SD98B
Unit Size (WxDxH) (mm)	595x510x1005
Carton Size (WxDxH) (mm)	681x591x1084
Capacity (L)	98
Temperature Range(°C)	-25~-18
N.W/G.W (kgs)	53/58
Input Power(W)	178
Power Consumption(Kw-h/24h)	3.3
Loading 20'FT/40'GP/40'HQ	54/120/120
Certification	CE,CB,ETL,ROHS,SAA



Model No	NW-SD50B
Unit Size (WxDxH) (mm)	460x447x855
Carton Size (WxDxH) (mm)	541x537x910
Capacity (L)	50
Temperature Range(°C)	-25~-18
N.W/G.W (kgs)	33/35
Input Power(W)	178
Power Consumption(Kw-h/24h)	2.2
Loading 20'FT/40'GP/40'HQ	80/176/176
Certification	CE,CB,ETL,ROHS,SAA

Slim Upright Freezer with Light Box



Optional Details

We supply slim upright freezer with lightbox, which has more space to frozen food, from 105 to 230 liters. It's designed for brand advertising and frozen food displaying in the supermarkets, shops, hotels and ect..



Light box



Digital temperature control



Internal fan



Lock



LED light




Shelves

Customized Cases

Features and Benefits

- Inner fan for even cooling
- Attention-grabbing lightbox design
- Slim showcase and space-saving design
- Self-evaporation water tray, user-friendly
- Interior LED light with switch
- Aluminum shelf clip with high-reliability
- Heating glass door and automatic closing door

Certification:  **CB CE SAA RoHS**



NW-SD105B

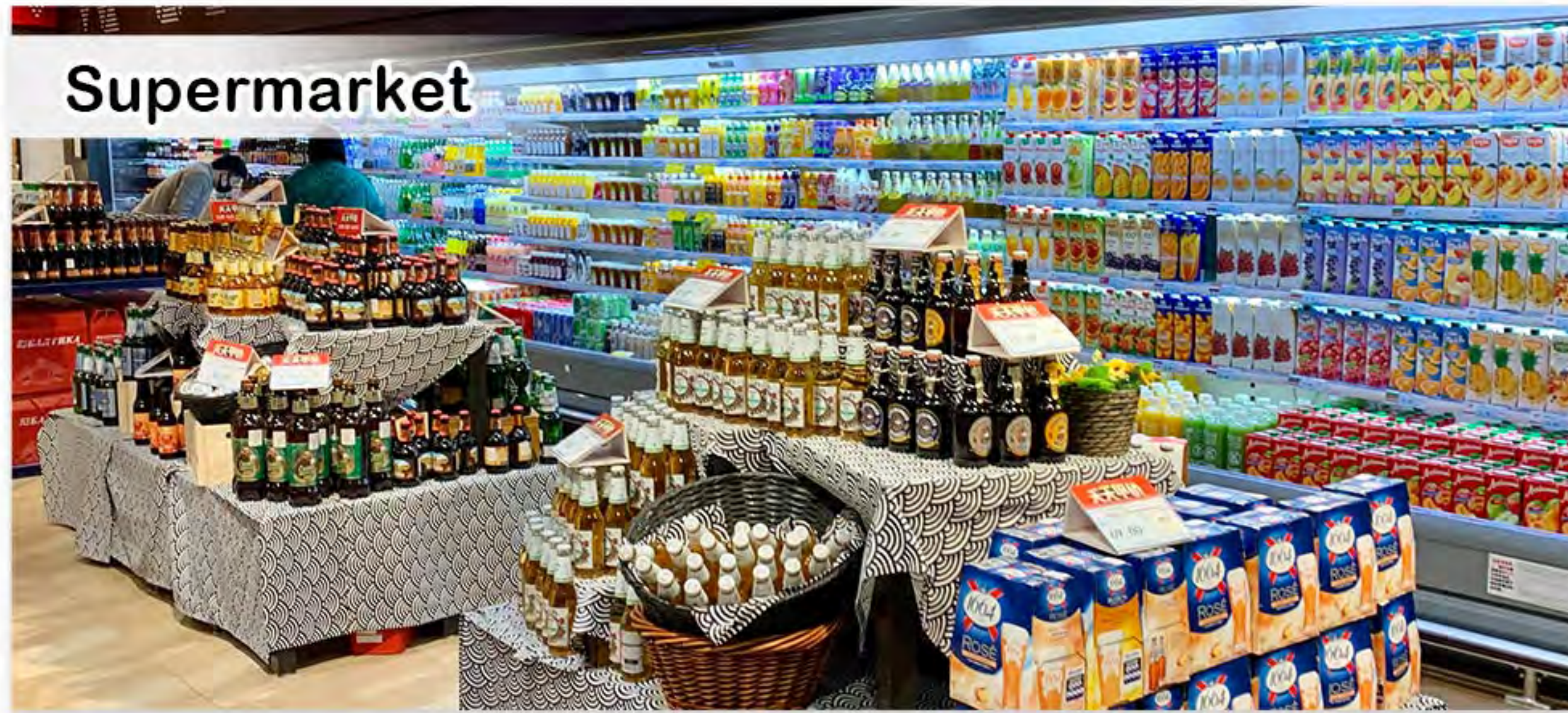


NW-SD150B



NW-SD235B

Product Applications



Product Parameters



Model No	NW-SD105B
Unit Size (WxDxH) (mm)	420x430x1845
Carton Size (WxDxH) (mm)	502x529x1959
Capacity (L)	105
Temperature Range(°C)	-25~-18
N.W/G.W (kgs)	65/70
Input Power(W)	180
Power Consumption(Kw-h/24h)	2.4
Loading 20'FT/40'GP/40'HQ	44/92/92
Certification	CE,CB,ETL,ROHS,SAA



Model No	NW-SD150B
Unit Size (WxDxH) (mm)	440x625x1880
Carton Size (WxDxH) (mm)	500x685x1940
Capacity (L)	150
Temperature Range(°C)	-25~-18
N.W/G.W (kgs)	75/79
Input Power(W)	330
Power Consumption(Kw-h/24h)	6.5
Loading 20'FT/40'GP/40'HQ	32/68/68
Certification	CE,CB,ETL,ROHS,SAA



Model No	NW-SD235B
Unit Size (WxDxH) (mm)	585x625x1880
Carton Size (WxDxH) (mm)	645x685x1940
Capacity (L)	230
Temperature Range(°C)	-25~-18
N.W/G.W (kgs)	92/98
Input Power(W)	365
Power Consumption(Kw-h/24h)	8.7
Loading 20'FT/40'GP/40'HQ	27/54/54
Certification	CE,CB,ETL,ROHS,SAA